



Mr. Tanaka and his academy having lots of fun.

## January/February 2012

### Principal's Message

Dear Parents,

We are about a month into our second semester. We are looking forward to some exciting, and fun activities during our Health and Spirit Week, January 30 to Feb.3, 2012. Look for the Spirit Themes and what the students are encouraged to wear during the week in this newsletter. We will have a walk-a-thon on Monday morning at 8:15am to kick off the week. On Wednesday, Feb. 1st we will have our first annual Physical Fitness Meet from 8:30am-10am. Please make sure that your children wear their shoes on those two days.

Our Kailua/Kalaheo complex area schools have been receiving professional development through Targeted Leadership Consulting. The purpose is to improve instructional practices and support student learning. Our Instructional Learning Team participates in trainings to help guide our

school toward a focused target for improvement specifically in Math. A team of teachers, principals, complex area staff and consultants visited Kailua Elementary on Thursday, January 26. We received positive feedback from the teams. Some of the teams had this to say about our school: "You have done an amazing job with the education of your students. It clearly shows the level of support for all involved in the students' learning and growth. Thank-you for letting me be a witness to a school dedicated to student achievement and development." "I was impressed how well the kids behaved and how the teachers kept them engaged. They were all helpful and positive. Great job!" Positive classroom environment. Students were well-behaved and interested in the learning. Students were trying to do what they were being asked to do. Good effort." We are pleased with the positive feedback and applaud our teachers, staff and students!

Please come and join us whenever you can. We value being a partner with you in your child's education.

With Much Aloha,  
Lanelle Hibbs

Principal

### In this Issue:

Principal's Message	1
Ways to earn \$ for our school...	
A message from Rep. Cynthia Thielen	1
	2
Mark Your Calendars	2
Attendance System Reminder	2
	2
	2
	2
	2

### Health and Spirit Week

- Monday: Walk-A-Thon & Wear a Sports Uniform Day
  - Tuesday: Crazy Hair Day
  - Wednesday: Physical Fitness Meet & Wear Your Green Shirt Day
  - Thursday: Wear Your Pajamas to School Day
  - Friday: Wear Mismatched Clothes Day
- Walk-a-Thon starts at 8:15am & Physical Fitness Meet starts at 8:30am

### Many Thank-Yous!

Thank-you to all who volunteered at the Math-a-Thon and Thanks! to our Military Partners for helping us read better and making our bodies a little more healthier. If you would like to volunteer for our Physical Fitness Meet or our Walk-a-Thon please email Michelle Letchford at [kescnc@gmail.com](mailto:kescnc@gmail.com) and leave the following information: your name, child's name, their teacher, and which event you would like to volunteer for. She will get back to you to reconfirm.

### A MESSAGE FROM REP. CYNTHIA THIELEN:

Each year the Governor appoints a student representative to serve on Hawaii's ten member State Board of Education as a nonvoting member. This student represents 250 primary and public schools in Hawaii and shares the same responsibilities as the other board members. This Legislative session, I am introducing a bill which would allow BOE student representatives the right to vote on all Board of Education matters except personnel issues.

Now is the time that our student's voices are not only heard, but counted!

With Warm Aloha,

Representative Cynthia Thielen 50th District (Kailua, Kaneohe Bay)

3 Great Ways to Help Earn \$ for our School:



Box Tops for Education:  
You clip 'em, We'll count 'em!  
Our goal this year is \$500...



Labels for Education:  
Check your soup cans. Save the labels!



eScrip: Link your Safeway Club Card to our school!  
It's easy...  
• Go to [escrip.com](http://escrip.com)  
• Create account  
• Choose Kailua Elementary School

# January

1. Health and Spirit Week begins on Jan. 30.

Coming in:

# February

1. Health and Spirit Week end Feb. 3.

2. Our First Annual P.E. Meet is Feb. 1, 2012.

3. Celebrity Role Model Luncheon is Feb.8.

4. SCC Meeting is Feb.13 at 5pm

5. PTSA Meeting is Feb.13 at 5:30pm.

6. H.S.A On-Line Testing #2 is Feb. 13th - 29th.

7. President's Day Holiday-No School. Feb. 20th.

mark	your	calendars!
Mon. Jan. 30 Health & Spirit Week begins Walk-a-Thon at 8:15am.		Wed. Feb.1,2012 Our First Annual Physical Fitness Meet at 8:30am.
	Wed. Feb.8,2012 Celebrity Role Model Luncheon for Lower El.	
Mon. Feb.13,2012 SCC Meeting at 5pm. PTSA Meeting at 5:30pm. Both in the school library.	H.S.A On-Line Testing #2 is Feb. 13 to Feb. 29.	President's Day Holiday-No School Feb. 20, 2012

### School Meal Price Changes

The tiered pricing shown below took effect on Thursday, September 1, 2011.

<b>Breakfast:</b>	<b>New Price</b>
Elementary Student	\$1.00
Secondary Student	\$1.10
Reduced-price Student	\$0.30
Second and subsequent student	\$2.20
Adult	\$2.20
<b>Lunch:</b>	
Elementary Student	\$2.25
Secondary Student	\$2.50
Reduced-price Student	\$1.85
Second student entree	\$1.85
Second and subsequent student	\$5.00

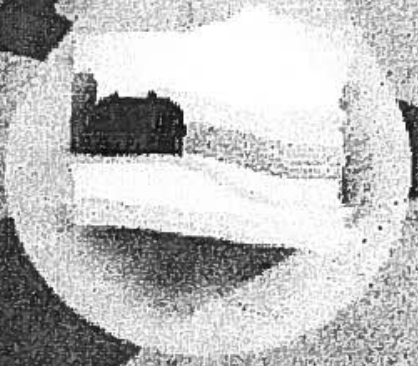
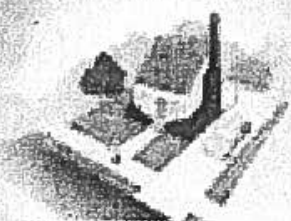
### Attendance System Reminder:

**Absences:** Please notify the office if your child is ill and will not be in school by 8:00 am. This can be done by calling the attendance line at 266-7878 ext. 500.

**Future Absences:** Please send a note ahead of time to the office. If you have to pick up your child early, please send a note or all the office to request a Student Pass. You must pick up and sign your child out in the front office.

**Tardies:** After 8:00 am, a student is late. The student must report to the office for a "Tardy Pass" before going to his/her class. If a chronically tardy, a parent/guardian conference will be scheduled.

# Clean Water



Everybody's  
Business

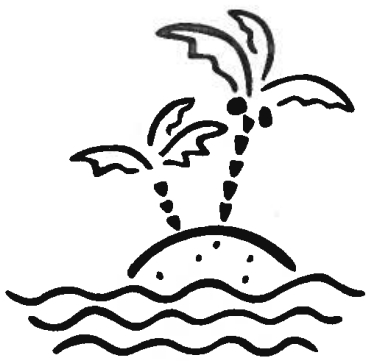


## 10 Things You Can Do to Prevent Stormwater Runoff Pollution

- Use fertilizers sparingly and sweep up driveways, sidewalks, and gutters
- Never dump anything down storm drains or in streams
- Vegetate bare spots in your yard
- Compost your yard waste
- Use least toxic pesticides, follow labels, and learn how to prevent pest problems
- Direct downspouts away from paved surfaces; consider a rain garden to capture runoff
- Take your car to the car wash instead of washing it in the driveway
- Check your car for leaks and recycle your motor oil
- Pick up after your pet
- Have your septic tank pumped and system inspected regularly



For more information, visit  
[www.epa.gov/nps](http://www.epa.gov/nps) or  
[www.epa.gov/npdes/stormwater](http://www.epa.gov/npdes/stormwater)



## WATER POLLUTION PREVENTION AT KAILUA ELEMENTARY SCHOOL

Kailua Elementary School is located on Kuulei Road in Kailua. Its neighbors include the Kailua Public Library and Kailua City Police and Fire Station. Storm water discharges from the campus flow via the small Municipal Separate Storm Sewer System to the City, which discharges to Kawainui Stream, a Class 2 inland water.

The average annual rainfall at the school is approximately 41 inches. The school site is fairly flat and the stream flows through the campus.

When it rains, water flows over campus and streets carrying the pollutants it picks up into storm drains. Storm drains are not connected to the wastewater treatment plant. Therefore, the pollutant water flows directly into our streams and ocean.

Pollutant means any hazardous waste, petroleum products, pesticides, detergents, chemical fertilizers, sewage sludge, animal waste, soil erosion and soil, accumulation of sediments, and construction waste and materials.

### WHAT YOU CAN DO TO HELP PROTECT WATER

#### STAFF ACTIVITIES

**Use water wisely.** By conserving water, the amount of wastewater needing treatment and disposal will be reduced. Overwatering and runoff can carry pollutants into the storm drain system.

**Use and dispose hazardous substances properly.** Always read the product label and choose the least toxic alternative. Motor oil, paints, solvents and other chemicals should not be poured on the ground or down the storm drains, because they can pollute our streams and ocean. Motor oil is recycled at oil change locations; other chemical products should be first used up by buying only the amount needed; typically unused excess could be evaporated or soaked into clay litter, wrapped in plastic and disposed with trash. Excess pesticides require special handling and must be disposed as hazardous waste.

**Use fertilizer and pesticides sparingly.** Choose the least toxic alternative such as compost for fertilizer, repellent/resistant plants and instead of bug sprays, use baited traps. Follow label instructions and use only the amount needed. Apply outdoors only during dry weather, rain water can easily carry substances to nearby storm drains and stream.

**Landscape the land to prevent erosion.** Cover bare ground with grass, shrubs or trees to hold soil in place. Establish native plantings and provide vegetation buffer zones along storm drains and stream.

**Improve housekeeping.** Fix water leaks throughout campus by replacing faucet washers and toilet flappers as needed. A slow drip or leak can easily waste more than 100 gallons of water a week. Put all litter into trash cans so it does not get washed into the storm drains or streams.

**Implement annual campus cleanup event.** Coordinate cleanup event for the whole campus to collect litter and address any other issues that would impact storm water quality, such as storage of materials and soil erosion areas. Maintain record of litter collected and other changes that impact storm water quality and take before and after photos of campus.



#### STUDENT ACTIVITIES

**Study storm water management.** Teachers can address hazards associated with illicit discharges to our storm drains and streams. Develop steps that can be taken to reduce storm water pollution.

**Learn about good housekeeping.** Good housekeeping practices are simply maintaining a safe, orderly and clean learning environment. Conduct an individual or class project to reinforce pollution prevention activities consistent with protecting storm water.

**Learn where your wastewater goes.** Investigate the wastewater drainage process from campus to the ocean via streams, storm and sewer drains.

**Educate others.** Conduct an individual or class project to inform others about protecting our ocean from pollution.

**Participate in annual campus cleanup event.** Participate in a campus cleanup day to collect litter and address any other issues that would impact storm water quality, such as storage of materials and soil erosion areas.

### REPORT ANY ILLEGAL DISCHARGE

As a member of Kailua Elementary School, we can make a difference, report any illegal discharge in our school and community.



### SPILL RESPONSE

- Local (Honolulu Fire Department):
- State Hazard Hotline:

911 (24/7)

586-4249 (business hours)

247-2191 (after hours)

To report illegal discharge that has already occurred, call 768-3203 (City Illegal Dumping Hotline)

Polluted runoff public outreach: 692-5208 (City), 586-4309 (State)

**Share pollution prevention behaviors and practices  
with your family, friends and neighbors**

